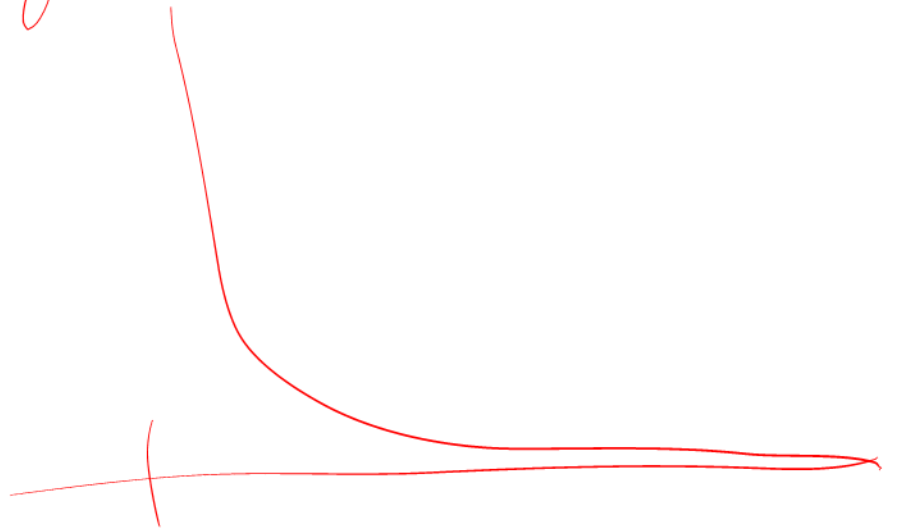
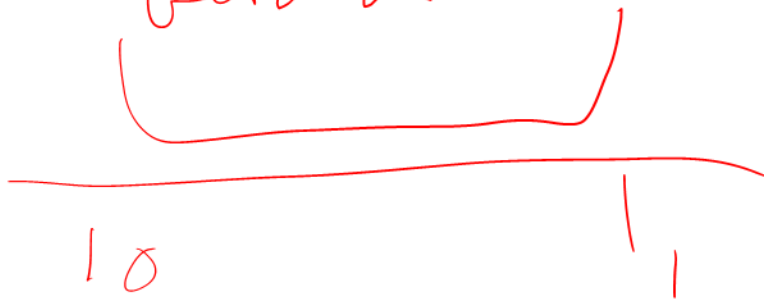


gamma dist $\alpha < 1$



beta dist



$$C x^{\alpha-1} e^{-\lambda x}$$

$$C x^{\alpha_1-1} (1-x)^{\alpha_2-1}$$

unbounded at 0 if $\alpha_1 < 1$
" " $\alpha_2 < 1$

Cauchy (μ, σ)

